



LCVP
LEAVING CERTIFICATE VOCATIONAL PROGRAMME

LCVP

- What is LCVP?

This an Enhanced Leaving Cert Programme which involves 2 modules (Enterprise Education & Preparation for the World of Work)

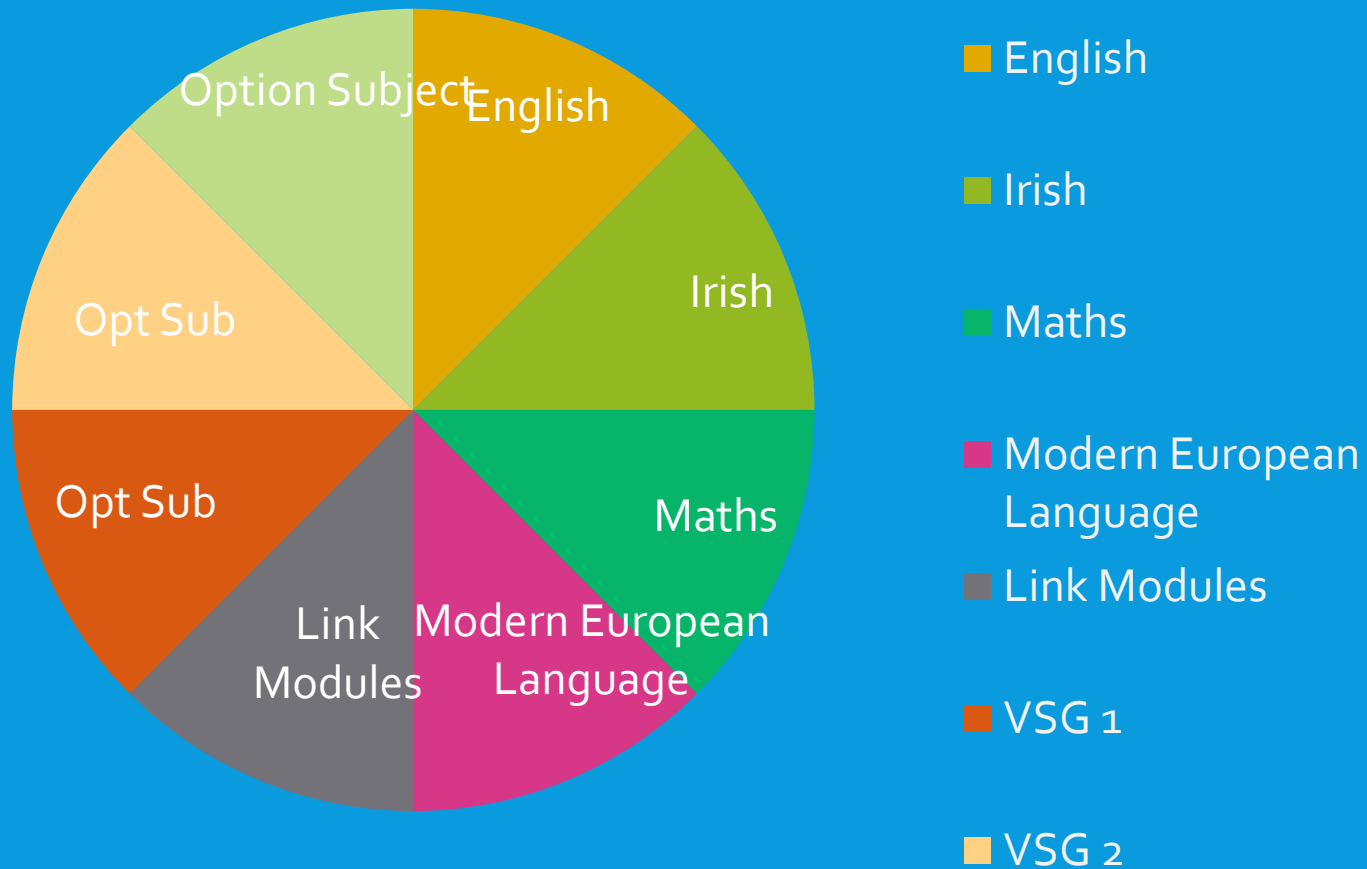
This can be taken as an add on to your current Leaving Certificate.

- Students complete 2 classes per week

PROGRAMME REQUIREMENTS

- 2-year duration
- Minimum 5 Leaving Certificate Subjects at Higher, Ordinary or Foundation level
 - to include Irish (unless the student has an exemption)
 - Modern European Language (unless the student has an exemption)
- ICT

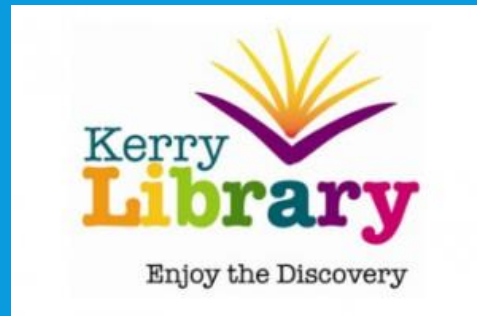
LCVP STRUCTURE



WHAT WILL STUDENTS' STUDY?



- Introduction to the course – emphasis on the importance of Portfolio which is 60% of the subject.

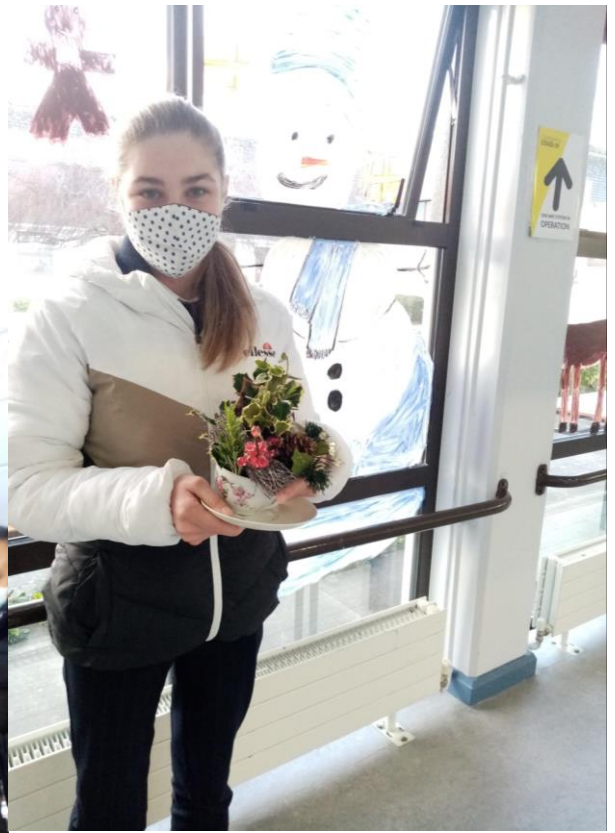


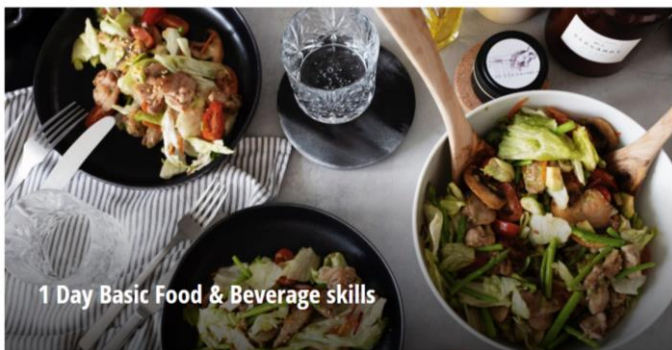
ENTERPRISE MODULE

(SEPT – DEC 5TH YEAR)

- Enterprise Education - students design, produce and market a product at our Christmas Market
- Enterprise Action Plan
- **Maura Sheehy** from Maura's Cottage Flowers - Skills based Workshop on Flower Arrangements







WORLD OF WORK MODULE

- Work experience – 1 week
- Detail CV Preparation, employment legislation & industrial relations –
- Speaker – Rights & Responsibilities, Pay rates – Summary Report
- Diary of Work Placement Report – Exceptional IT skills
- Employment reference
- **Certified Hospitality Course**

6TH YEAR

- Detailed Career Investigation – two entry paths
- Encourage students to interview an individual
- Use various methods to investigate a career.
- Speakers – Mary O'Donnell – Beauty Consultant and Teresa Walker Lee Strand Milk

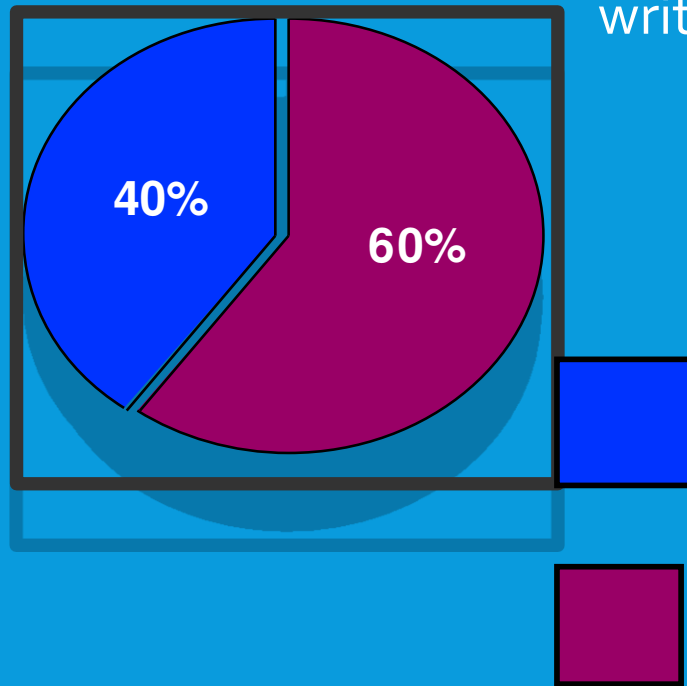
Career Investigation

- Recorded interview



LINK MODULES ASSESSMENT

- The Link Modules are assessed by written examination and portfolio



Written

May LC Year

Portfolio

March LC Year

PORTFOLIO - MARCH LC YEAR

A COLLECTION OF DOCUMENTS

Core Items

- Curriculum Vitae
- Career Investigation
- Summary Report
- Enterprise/Action Plan

OPTIONAL ITEMS:

Two out of Four

- Diary of Work Experience
- Enterprise Report
- Report on 'My Own Place'
- Recorded Interview/Presentation

WRITTEN EXAMINATION (MAY LC YEAR)

- **Section A - Audio-Visual Presentation**
 - Video sequence of an enterprise
- **Section B - Case Study**
 - Received 4 weeks in advance
- **Section C - General Questions**
 - Choice of 4 questions from 6

LCVP RECOGNITION

- Entry to Universities and Institutes of Technology
- Link Modules is a qualifying subject for points however, the students must have 6 core subjects plus LCVP to use it for points for university.

Distinction	80% - 100%
Merit	65% - 79%
Pass	50% - 64%

POINTS

Grade (%) Points

H1 (90-100)	100
H2 (80<90)	88
H3 (70<80)	77
H4 (60<70)	66
H5 (50<60)	56
H6 (40<50)	46
H7 (30<40)	37
H8 (0<30)	0

Grade (%) Points

O1 (90-100)	56
O2 (80<90)	46
O3 (70<80)	37
O4 (60<70)	28
O5 (50<60)	20
O6 (40<50)	12
O7 (30<40)	0
O8 (0<30)	0

LCVP POINTS FOR UNIVERSITIES & IT

Distinction 66 points

Merit 46 points

Pass 28 points

CREATING OPPORTUNITIES

Outings – Experience the Businesses and Gain Contacts for Employment

IT Skills & Certified Hospitality Course

60% is Portfolio which is completed in class.

Enhances their Curriculum Vitae

Access to Speakers - Preparation for interviews
– Employment Legislation

THANK YOU.....